

# ADVISORRESEARCH

## Wealth Hazards

Exploring the time value of fluctuations

BY JIM OTAR

Many of our clients spend between 20 and 30 years in retirement. In our current retirement planning practice, we assume an "average" portfolio growth rate for the entire time horizon. The reality is all asset values fluctuate continuously. Many in the financial planning industry naively think that if they use historic averages then everything will be fine in the long run.

Unfortunately, this is not the case. There is always a permanent loss due to the fluctuations in a distribution (retirement) portfolio. In many cases, this loss can cut the portfolio life by half of what a standard retirement calculator predicts using an "average" growth rate.

If there are no cash flows in or out of a portfolio and if you lose 20%, you must eventually gain 25% to break even. The following table shows how much you need to gain for various losses:

% Loss	% Gain required to break even
5%	5.3%
10%	11.1%
20%	25.0%
30%	42.9%
50%	100.0%
80%	400.0%

Can we use the same table if there is a periodic withdrawal from the portfolio? The answer is no. In distribution portfolios, you need significantly higher gains to break

even. Not only do you need to recover the market losses, but you also need to recover the differential losses between the original plan and the actual portfolio value. That is why more and more pension funds are going into an irrecoverable downward spiral. They are blaming the markets for what is actually the failure to including the concept of time value of fluctuations in their model.

The time value of fluctuations is calculated using the following set of equations developed by this writer:

$$(1) FA = PI \times (1 + GI)^{N+M} - WA \times [(1 + GI)^{N+M} - 1] \div GI$$

$$(2) FA = PC \times (1 + GR)^M - WA \times [(1 + GR)^M - 1] \div GR$$

$$(3) TG = (1 + GR)^M - 1$$

where:

PI is the original portfolio value

PC is the current portfolio value

FA is the projected future value of the portfolio based on the original retirement plan

GI is the original assumed annual growth rate

GR is the future annual growth rate required to break even

N is the number of years since the original plan

M is the number of years required to break even

WA is the annual withdrawal amount from the portfolio

TG is the total gain in percentage required to meet the original

retirement plan portfolio value

Firstly, calculate the future value (FA) of the portfolio based on your original assumptions at the beginning of retirement using Equation (1).

Next, go to Equation (2). This is a trial and error calculation: Enter an assumed value for GR (future annual growth rate required to break even), calculate the right hand side of Equation (2) and see if it is equal to the value of FA calculated in Equation (1). Vary the value of GR as needed and repeat this calculation until the right hand side of the equation (2) equals to the value of FA calculated in Equation (1).

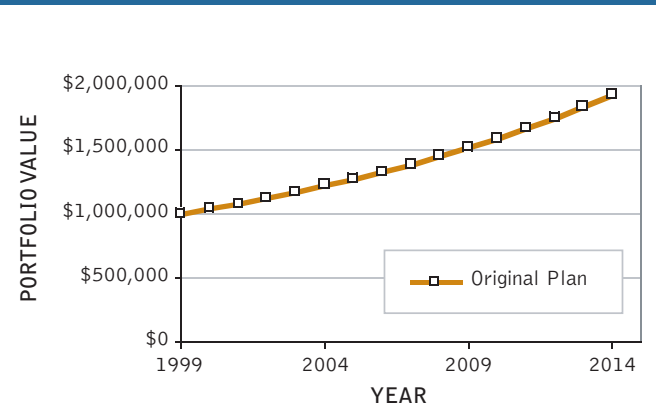
Once you figure out the value of GR, you can then calculate the total gain in percentage required to catch up with the original plan projection using Equation (3).

The table below shows how much you need to gain over a three-year time period for various loss and withdrawal rates, assuming a steady increase of the portfolio value after the initial loss and no indexation of withdrawals over time.

For example, if your initial withdrawal rate is 4% and your portfolio loses 20%, then it has to grow a total of 42% over the next three years just to break even.

% Loss	Initial Withdrawal Rate			
	0%	4%	6%	8%
	% Gain Required over 3 years			
10%	11%	26%	33%	41%
20%	25%	42%	51%	60%
30%	43%	63%	74%	86%
50%	100%	132%	150%	169%
80%	400%	525%	597%	676%

### BOB'S ORIGINAL RETIREMENT PLAN



To keep things simple, no inflation factor is considered in the preceding formulae. In real life, inflation is important. The following example shows the effect of real-life time value of fluctuations for someone retired at the end of 1999.

#### A REAL-LIFE EXAMPLE

Bob retired at the end of 1999 at age 60. At that time, he had \$1 million in his portfolio. He invested all this money in an S&P 500 index fund with an annual management fee of 0.25%. The annualized growth rate of the S&P500 between 1975 and 1999 was 17.2%. But Bob used a more conservative growth rate of 10% when he prepared his retirement plan five years

ago. He withdraws \$60,000 from his portfolio each year indexed to CPI. He assumed an annual average long-term inflation rate of 3% for his projections.

Using a retirement calculator, Bob's original retirement plan projected the asset value portrayed in the chart above.

Pension funds are blaming the markets for what is actually the failure to including the concept of time value of fluctuations in their model.

It is now five years later, January 2005. Bob's portfolio is down. He wants to know by how much S&P 500 has to go up over the next five years (by the end of 2009) so that his portfolio can catch up with his original retirement plan projection. The chart on the next page shows the actual performance of his portfolio over the last five years.

**OpenSky**  
CAPITAL

www.openskycapital.com

For further information on our products:

**QUEBEC, MARITIMES & EASTERN ONTARIO**

(514) 393-1818  
1-866-317-1818

**ONTARIO**

(416) 363-0210  
1-866-823-2780

**MANITOBA & SASKATCHEWAN**

(403) 410-6979  
1-877-410-6979

**ALBERTA**

(403) 410-6982  
1-877-881-6982

**BRITISH COLUMBIA**

(403) 410-6977  
1-866-881-6977

## Your RRSP Solution Provider

Canada's leading structured product company and its partners offer you:

### 100% principal protection at maturity

- ▲ Blue Chip Optimizer Notes, SERIES 1
- ▲ Index Optimizer Notes, SERIES 14

**citigroup**  
CITIBANK CANADA

- ▲ Progressive Income Notes, SERIES 2
- ▲ Asset Allocation Notes, SERIES 5
- ▲ Notes Linked to a Basket of Commodities, SERIES 7

**SOCIETE GENERALE**  
Corporate & Investment Banking  
Société Générale (Canada)

- Liquidity through a weekly secondary market (starting 6-12 months after issuance with no DSC)
- No foreign currency exposure

This advertisement is for information only and does not constitute an offer to sell or a solicitation to buy the Notes. The Notes are an investment providing principal protection at maturity. The fluctuation of the underlying securities may directly impact the return payable at maturity. It is therefore possible that no return will be paid. The complete information related to this issue of the Notes is included in an Information Statement which is available upon request and will be sent to investors prior to the closing date. Potential purchasers should consult the Information Statement before investing in the Notes.

ADVISORRESEARCH

Going forward, Bob assumes a 3% inflation rate, 1.6% dividend yield and 0.25% annual management fees. He calculates the S&P 500 must go up by 32.8% per year for each of the next five years to catch up with the original retirement plan (not including exchange rate losses). In other words, it must nearly quadruple from where it is now until the end of 2009. Is this a reasonable expectation? Definitely not.

Bob now understands the time value of fluctuations. At this point, he decides, "what is lost is lost" and he wants to make a fresh start. He decides to be more conservative and hold a balanced portfolio. This time he assumes an average annual growth rate of 7%. Everything else being equal, what kind of longevity can Bob expect from his portfolio?

According to his revised retirement plan, Bob's portfolio will run out of money in 10 years – at age 75 – instead of being worth nearly \$2 million as he originally forecasted just five years ago. That is the price Bob has to pay for not

considering the time value of fluctuations when he prepared his original retirement plan. For Bob, it is game over; he should definitely look into life annuities at this point in his life.

**For individual retirement accounts, your mission must be to preserve the capital especially during the first four years of retirement.**

**CONCLUSION**

Routine losses over a few years can ruin a retirement plan for good because of the time value of fluctuations. As a matter of fact, you don't need to have any losses at all in your portfolio. If a portfolio grows less than the original projection for just one market cycle (typically four to five years) at the beginning of retirement, the likelihood of ever catching up with the original retirement projection will diminish to near zero.

Compounding works for you

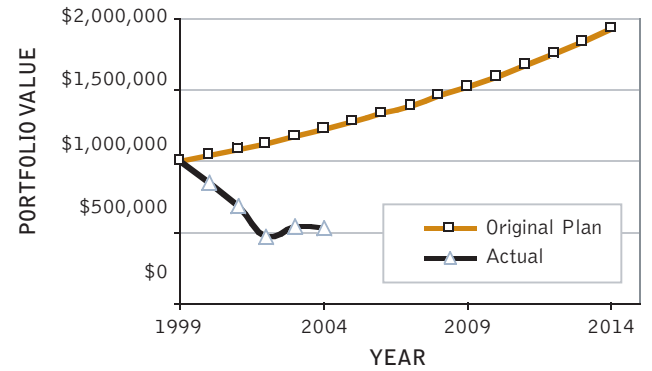
during accumulation years and against you during distribution years. This is how the time value of fluctuations works.

For individual retirement accounts, your mission must be to preserve the capital especially during the first four years of retirement. The longevity of the retirement portfolio is exponentially proportional to how successful you are in accomplishing this task. For pension funds, the problem is a bit more complex but it follows the same logic.

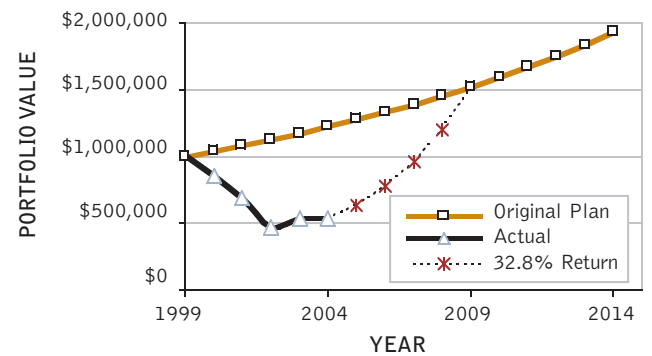
AER

*Jim Otar, CFP, is a financial planner, a professional engineer, a market technician, a financial writer, and founder of www.retirementoptimizer.com. His past articles on retirement planning won the CFP Board Article Awards in 2001 and 2002. He is the author of High Expectations and False Dreams – One Hundred Years of Stock Market History Applied to Retirement Planning. This article is excerpted from his upcoming book Mathematics of Retirement. Your comments are welcome: jimotar@rogers.com*

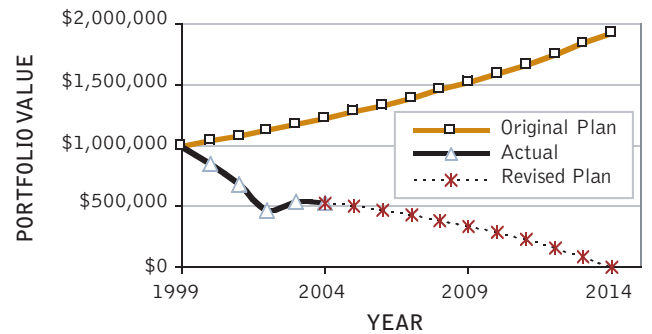
**BOB'S ACTUAL PERFORMANCE**



**REASONABLE EXPECTATION?**



**LOOK INTO LIFE ANNUITIES**



James Naismith, Canadian inventor of basketball

*Introducing the next generation of*  
**Great Canadians.**

These "Great Canadians" boast a rich history of delivering consistent, above-average performance. These funds are managed by the disciplined growth experts at AEGON Capital Management. Call us today at 1-866-**imaxx-go** (1-866-462-9946) or visit our website at [www.imaxxwealth.com](http://www.imaxxwealth.com) to learn more about our funds.

Fund	As of Dec. 31/05*		Since Inception (6/02)	Morningstar® rating*
	1 Yr	3 Yr		
imaxx Canadian Bond Fund	5.90%	6.12%	6.19%	★★★★
imaxx Canadian Fixed Pay Fund	7.04%	17.97%	15.33%	Not available†
imaxx Canadian Equity Growth Fund	14.25%	23.72%	17.08%	★★★★★
imaxx Canadian Equity Value Fund	15.27%	14.12%	10.90%	★★★

**This RRSP season, come home to imaxxFunds.**



Commissions, trailing commissions, management fees, and expenses all may be associated with mutual fund investments. Please read the prospectus before investing. Mutual funds are not guaranteed, their values change frequently and past performance may not be repeated.

\* Performance numbers and ratings are as of December 31, 2005. Morningstar Ratings reflect performance as of 11/30/2005 and are subject to change monthly. The ratings are calculated from a fund's 3, 5, and 10-year returns measured against 91-day Treasury bill and peer group returns. The top 10% of the funds in a category get five stars. The Overall Rating is a weighted combination of the 3, 5 and 10-year ratings. For greater detail see [www.morningstar.ca](http://www.morningstar.ca). The star ratings and number of Canadian Bond funds for the imaxx Canadian Bond Fund for each period are as follows: 1 year, 4 stars, 91 funds, 3 years, 4 stars, 91 funds. The star ratings and number of Canadian Equity funds for the imaxx Canadian Equity Growth Fund for each period are as follows: 1 year, 3 stars, 197 funds, 3 years, 5 stars, 197 funds. The star ratings and number of Canadian Equity funds for the imaxx Canadian Equity Value Fund for each period are as follows: 1 year, 3 stars, 197 funds, 3 years, 3 stars, 197 funds.

† No rating available on Canadian Income Trust funds by Morningstar.™ Trademarks of AEGON Canada Inc. &/or its subsidiary companies. © AEGON and the AEGON logo are registered Trademarks of AEGON N.V. AEGON Canada Inc. and its subsidiary companies are licensed to use such marks. © Morningstar is a registered trademark of Morningstar Research Inc.

**MARKET CLOSES FOR 2005**

Dow Jones  
10,717.50

► YTD:  
-0.61%

S&P 500  
1,248.29

► YTD:  
+3.00%

NASDAQ  
2,205.32

► YTD:  
+1.37%

S&P/TSX Comp.  
11,272.26

► YTD:  
+21.91%

Nikkei  
16,111.43

► YTD:  
+40.24%

Hang Seng  
14,876.43

► YTD:  
+4.54%

FTSE 100  
5,618.80

► YTD:  
+16.71%

CAC 40  
4,715.23

► YTD:  
+23.40%

DAX  
5,408.26

► YTD:  
+27.07%